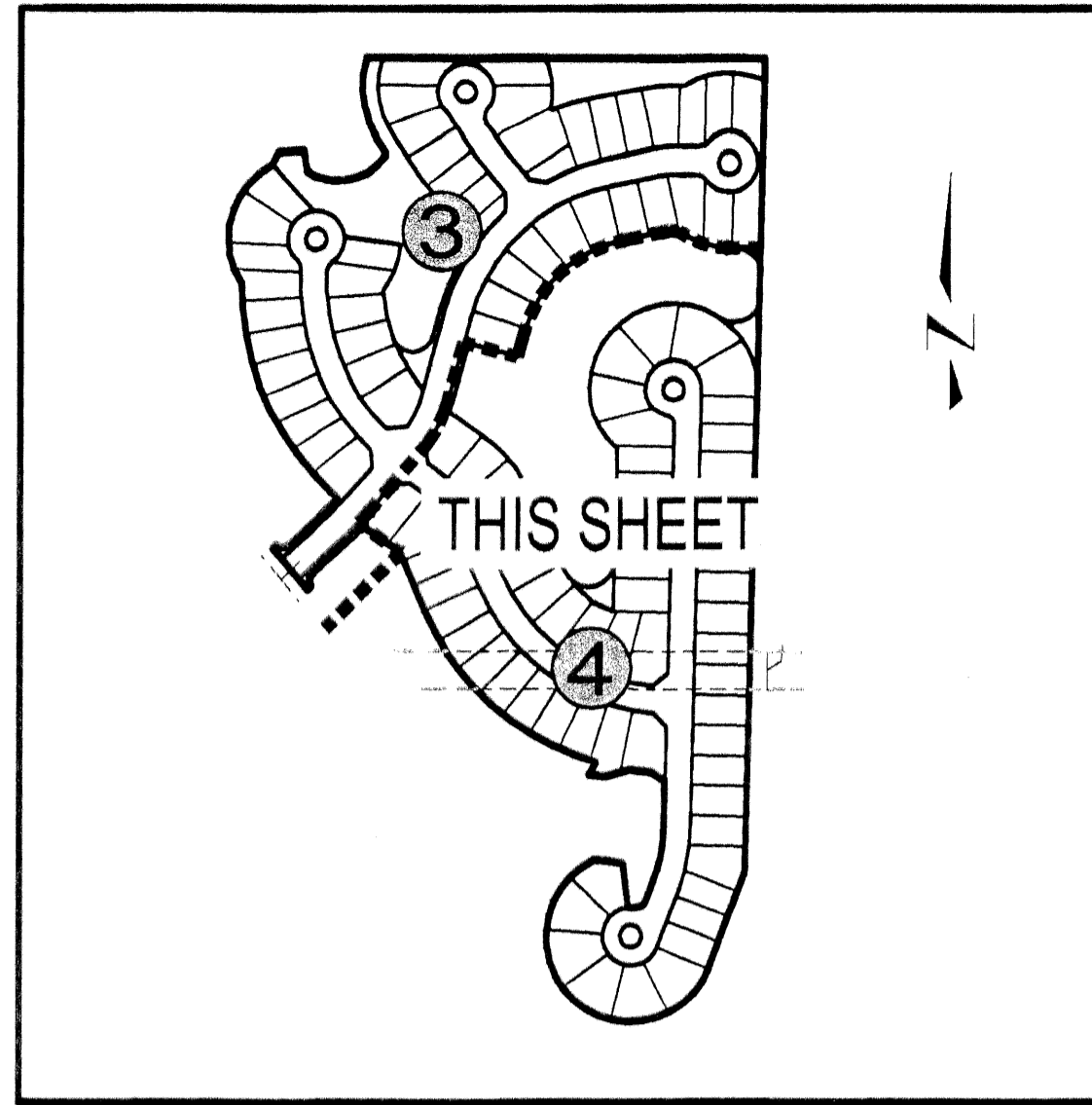


EVERGRENE P.C.D. PLAT FIVE

A REPLAT OF TRACT F-7 AND WATER MANAGEMENT TRACTS WM-6 AND WM-7, EVERGRENE PLAT TWO AS RECORDED IN PLAT BOOK 95, PAGES 29 THROUGH 54 INCLUSIVE, PUBLIC RECORDS OF PALM BEACH COUNTY, FLORIDA LYING IN THE NORTHEAST QUARTER OF SECTION 25, TOWNSHIP 41 SOUTH, RANGE 42 EAST, CITY OF PALM BEACH GARDENS, PALM BEACH COUNTY, FLORIDA

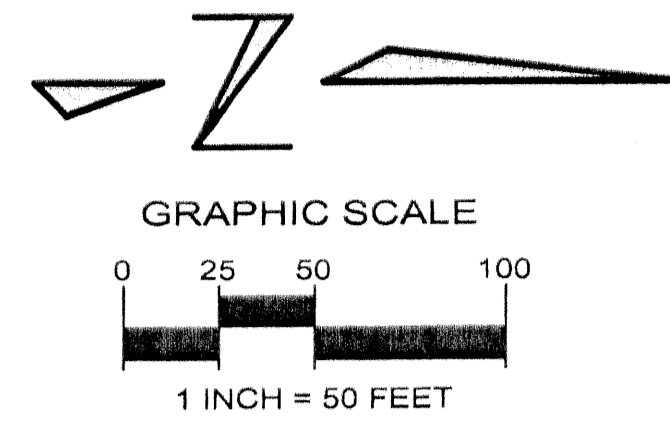
SHEET No.4 OF 4 FEBRUARY 2003



INDEX SHEET MAP NOT TO SCALE

CURVE	LENGTH	RADIUS	DELTA	CHORD BEARING	CHORD LENGTH
C1	12.40'	53.00'	13°24'23"	N89°24'21"W	12.37'
C2	26.72'	20.00'	76°32'01"	N59°01'50"E	24.77'
C3	3.83'	1165.85'	0°11'19"	S42°23'27"E	3.83'
C4	3.99'	20.00'	11°25'10"	N39°18'42"W	3.98'
C5	14.78'	90.00'	9°24'25"	S82°55'37"W	14.76'
C6	5.80'	90.00'	3°41'37"	S89°28'38"W	5.80'
C7	20.58'	90.00'	13°06'02"	S84°46'25"W	20.53'
C8	15.26'	20.00'	43°43'43"	N66°48'43"W	14.90'
C9	3.55'	20.00'	10°10'57"	N39°51'23"W	3.55'
C10	18.82'	20.00'	53°54'40"	N61°43'14"W	18.13'
C11	0.45'	158.00'	0°09'42"	S52°51'55"E	0.45'
C12	9.18'	20.00'	26°17'09"	N78°10'52"E	9.10'
C13	8.25'	20.00'	23°38'09"	N53°13'13"E	8.19'
C14	25.84'	113.00'	13°06'02"	S84°46'25"W	25.78'
C15	32.01'	140.00'	13°06'02"	S84°46'25"W	31.94'
C16	28.23'	523.00'	3°05'32"	N45°17'50"E	28.22'
C17	27.48'	523.00'	3°00'37"	N42°14'46"E	27.48'
C18	55.70'	523.00'	6°06'09"	N43°47'32"E	55.68'
C19	29.78'	473.00'	3°36'24"	N45°02'24"E	29.77'
C20	20.60'	473.00'	2°29'45"	N41°59'19"E	20.60'
C21	50.38'	473.00'	6°06'09"	N43°47'32"E	50.35'
C22	53.25'	500.00'	6°06'09"	N43°47'32"E	53.23'
C23	24.16'	50.00'	27°41'01"	N37°34'06"W	23.92'
C24	37.20'	77.00'	27°41'01"	N37°34'06"W	36.84'
C25	48.32'	100.00'	27°41'01"	N37°34'06"W	47.85'
C26	2.76'	250.00'	0°37'56"	N15°46'52"E	2.76'
C27	7.00'	260.00'	1°32'31"	N16°14'09"E	7.00'

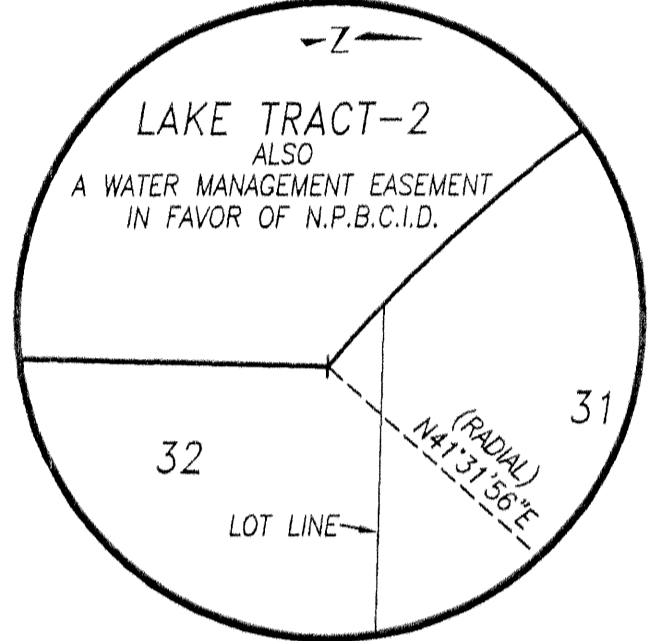
LINE	LENGTH	BEARING
L1	7.37'	N88°40'34"W



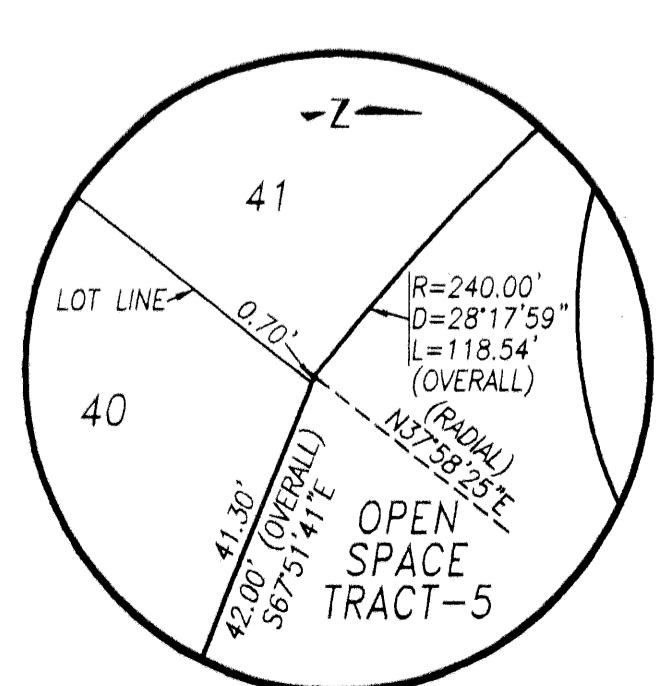
SYMBOLS LEGEND

- SET PERMANENT REFERENCE MONUMENT (P.R.M) "L.B.4897"
- PERMANENT CONTROL POINT (P.C.P)
- NPBCID NORTHERN PALM BEACH COUNTY IMPROVEMENT DISTRICT
- R RADIUS
- D CENTRAL ANGLE
- L ARC LENGTH
- LC CHORD BEARING AND DISTANCE
- P.O.B. POINT OF BEGINNING
- P.O.C. POINT OF COMMENCING
- ↔ CHANGE IN DIRECTION
- P.S.M. PROFESSIONAL SURVEYOR AND MAPPER
- PERMANENT REFERENCE MONUMENT (P.R.M) "L.B.2936"
- CHANGE OF DIRECTION PER EVERGRENE P.C.D. PLAT TWO
- ① 28' WATER MANAGEMENT MAINTENANCE EASEMENT
- ② 10' UTILITY EASEMENT (EVERGRENE PLAT TWO)
- ③ 10' UTILITY EASEMENT
- ④ NORTH LINE OF WATER MANAGEMENT TRACT WM-7 (EVERGRENE PLAT TWO)
- ⑤ LIMITS OF TRACT F-7 (EVERGRENE PLAT TWO)

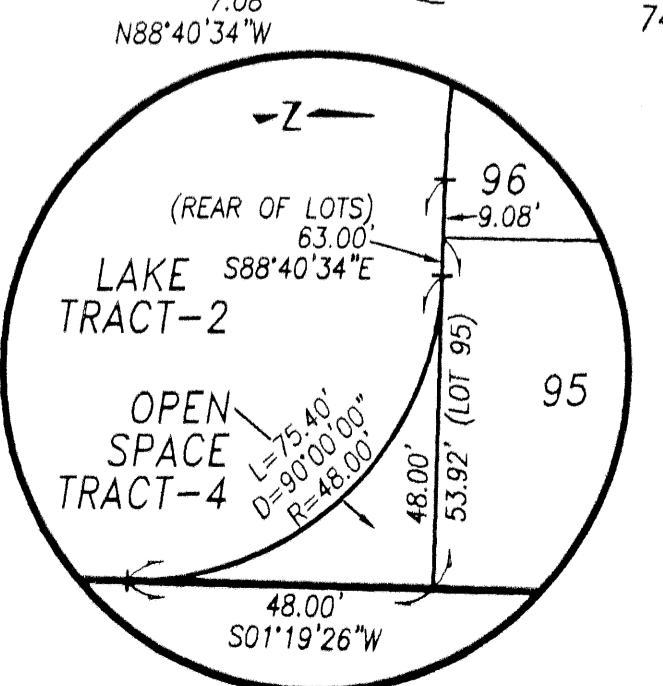
*NOTE: ALL LOT LINES ARE RADIAL UNLESS OTHERWISE SPECIFIED.
*NOTE: CERTAIN BEARINGS AND CENTRAL ANGLES ARE SHOWN IN FRACTIONAL SECONDS TO AVOID ROUNDING-OFF DISCREPANCIES.



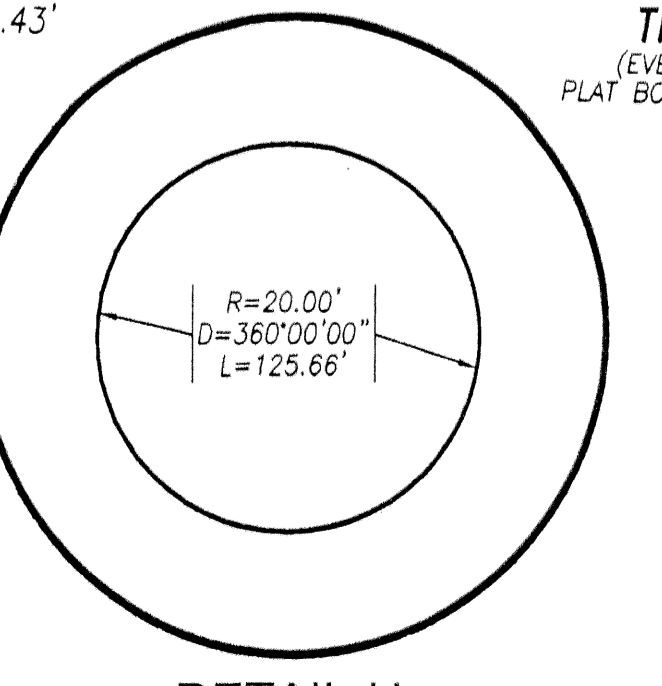
DETAIL-D SCALE: 1"=20'



DETAIL-E SCALE: 1"=20'



DETAIL-F SCALE: 1"=30'



DETAIL-H SCALE: 1"=20'

THIS AREA SEE SHEET No.3 OF 4

THIS AREA SEE SHEET No.3 OF 4

70'-WIDE N.P.B.C.I.D. DRAINAGE EASEMENT EPB3A ORB 2914, PG. 670 (ABANDONED PER ORB 14849 PG. 1210)

Keshavarz & Associates, Inc.
 CONSULTING ENGINEERS - SURVEYORS
 1280 N. Congress Avenue, Suite 206
 West Palm Beach, Florida 33409
 Tel: (561) 689-8600 Fax: (561) 689-7476 LB 4897
 THIS INSTRUMENT WAS PREPARED BY MANUEL A. GUTIERREZ, PSM
 PROFESSIONAL SURVEYOR AND MAPPER NO. 4102
 IN THE OFFICES OF KESHAVARZ & ASSOCIATES, INC.